

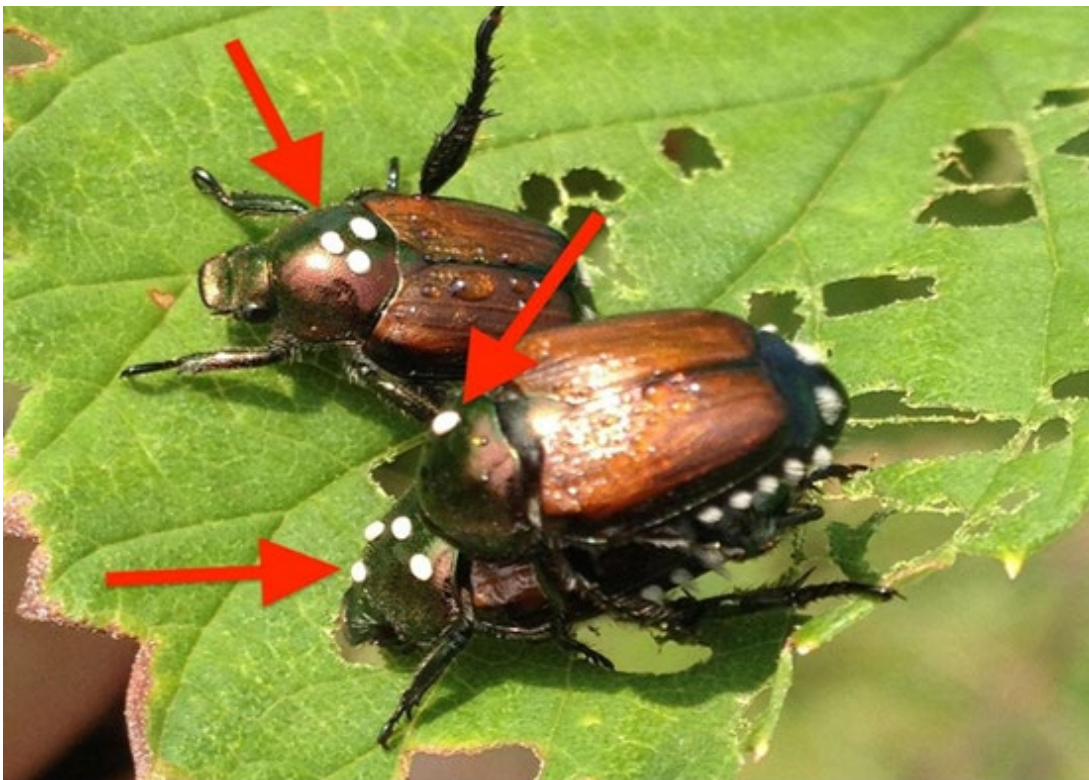
**Growers, Master Gardeners, and all interested in Japanese beetles**

**June 21, 2024**

Greetings from the Dept. of Entomology and University of Minnesota Extension

***Invitation to Join Winsome Fly Survey Team, 2024!***

I am an Extension Entomologist on the St. Paul campus, and writing this summer to seek your help in assisting our **Winsome Fly Survey Team**. The goal is to expand our understanding of the current distribution of the Winsome Fly in Minnesota – WF is a biocontrol agent of the Japanese beetle. WF is now naturally spreading in Minnesota.



Winsome Fly eggs on 3 Japanese beetles, including a mating pair (female JB below the male). One or more eggs are laid on each beetle. Eggs are nearly always laid just behind the head (pronotum). (credit: Jacques Lasnier, Quebec, Canada). In most cases, only one or two eggs will be deposited.

The Winsome Fly (WF, *Istocheta aldrichi*), a known beneficial parasitoid of JB adults, has been noticeable in Mpls/St Paul since 2017. During the past 3 summers, WF parasitism rates have been increasing (range, 10-60%) in several Metro areas. Based on our research, and the *iNaturalist* App, we have limited information on the current distribution of WF in Minnesota! **This summer, mainly July-August, we are inviting you to join us in this unique Citizen Science opportunity that can be interesting, fun, and require little time.** By pooling everyone's observations, we can greatly expand the known Distribution of WF, a key biocontrol agent for Japanese beetle.

## To Participate in the “WinFly Survey-2024”:

- 1)—Send us an email confirming your interest to: [winfly2024@umn.edu](mailto:winfly2024@umn.edu) and include your City, or Township, and County (or counties) where you plan to survey,
- 2)—Let us know if you have previously observed one or more Japanese beetles in your area?
- 3)—Let us know if you have previously observed WF Eggs on JB in your area? If so, include the Year, City, County, --- **but also plan to survey this year.**
- 4)—If you are already on *iNaturalist*, Plan to upload any WF Egg photo’s you take this summer.  
(Do not worry about trying to find adult flies; these are difficult to photograph, identify)
- 5)—If you’re not on *iNaturalist*, see the instructions below (page 3).

NOTE: If you are not interested in using *iNaturalist*, simply email your photo(s) to us and your City/Township & County (and GPS coordinates if possible\*).

For those who have JB adults in your area, we hope that many of you will join us in this new WF project! In the meantime, let me know of any questions, by sending an email to: [winfly2024@umn.edu](mailto:winfly2024@umn.edu)

Best wishes for an interesting, and safe summer!

Thanks in advance,  
Bill Hutchison  
Professor & Extension Entomologist

### Resources:

**UMN Extension article on Winsome Fly -- July, 2023**

<https://blog-fruit-vegetable-ipm.extension.umn.edu/search?q=Winsome+Fly>

### GPS:

\*Among the many apps to download GPS coordinates, you can use: “GPS Tour”  
(provides Latitude, Longitude in decimal format, which is preferred)

\*Also, if using an iPhone, after taking an insect photo, click on the “i” (info.) button below photo; then click on the “location name” just below photo, which provides the GPS coordinates for where the photo was taken.

## Instructions for joining iNaturalist

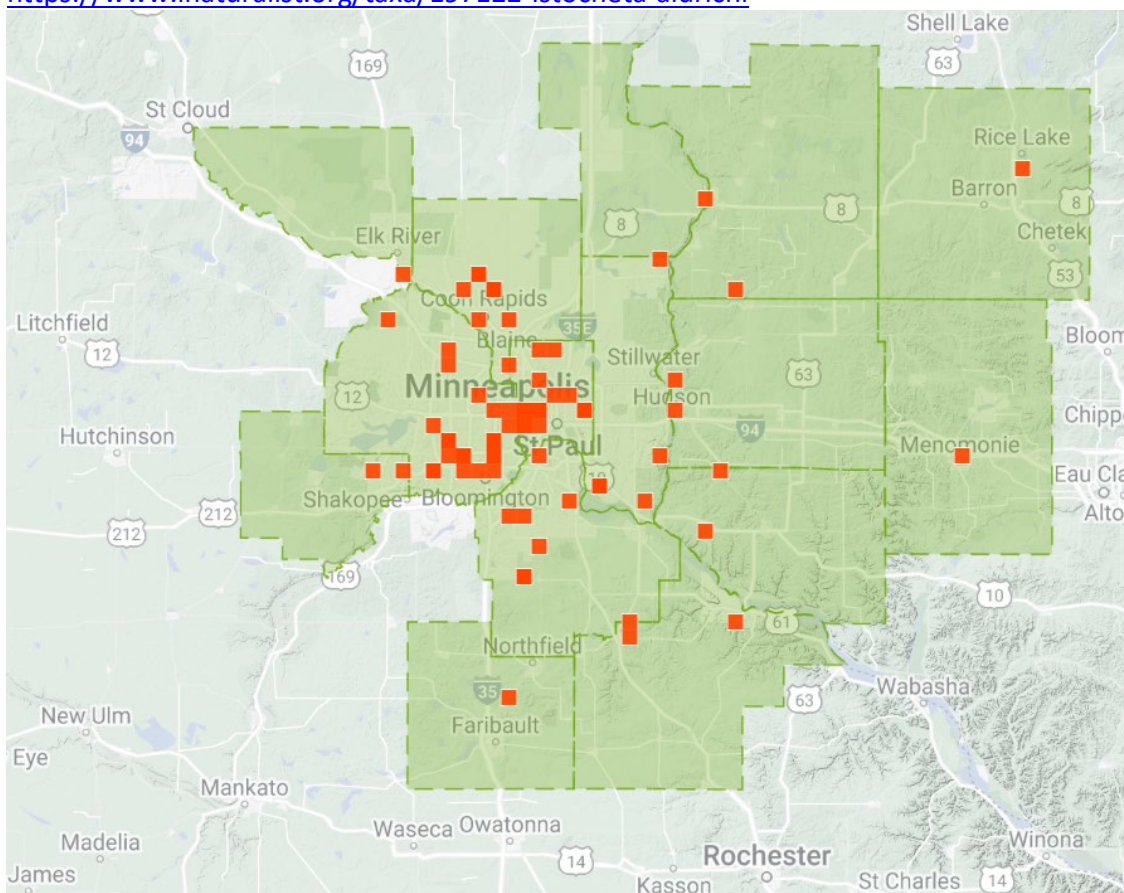
Go to the home page:

<https://www.inaturalist.org/>

- 1)—Create a username and password to get started.
- 2)—Do a Search on Winsome Fly to see what others have posted  
--you can view background info., and the current WF Map for MN (shown below)
- 3)—Once you have a photo to Upload, from your phone or digital camera, click the **Upload Tab** (Green, Upper right corner of page) -- the photo should automatically include the GPS coordinates for the location.
- 4)—Once the photo is uploaded, there will be a space on left side to enter the Name of insect: enter “Winsome Fly”, then save the entry.
- 5)—Again if you prefer, you can send your photo’s and location, direct to: [winfly2024@umn.edu](mailto:winfly2024@umn.edu)

### Current Winsome Fly map, on iNaturalist: (zoom in, out)

<https://www.inaturalist.org/taxa/197122-Istocheta-aldrichi>



*Current known Winsome Fly distribution in Minnesota (as of 2023).*